

A Quarterly Newsletter of the Guild of Painters & Limners, in Lochac



Study of the Eye, using nib and ink; Single hatching and double hatching. Single hatching are lines in one direction, double hatching (or cross hatching) is made from lines in more than one direction. Art by Lady Katerina da Brescia.

THE

EASEL

A Quarterly Newsletter of the Guild of Painters & Limners, in Lochac



It is August and our 3rd newsletter is here. This year is going fast

Thanks to Marit and Viscountess Lucrezia, for articles, and to Esclarmonda de Minerve for her bio.

Web site: www.sca.org.au/peyntlimners
This been updated. We are now known as the 'Painters & Limners Guild' as 'Peynters' was confusing.

I have received artwork from Master Giles Laval for the web site and would like to have some from others...

E-mail list: we have 26 members. Welcome. (This e-mail list is for members of our Guild)

To subscribe Painters email Group list address:

Peynters-subscribe@yahoogroups.com

LETTER
FROM THE
GUILD
MASTER

. Bio

Giles loves the quiet, orderly life of study, prayer and contemplation...however his many responsibilities ensure he never gets it. He likes pina colodas and getting caught in the rain.

your servant,

Giles

Mayor and Master of the Fraternity

FROM
PATRON

OUR

My visit to the Crescent Isles

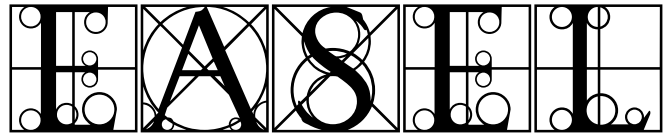
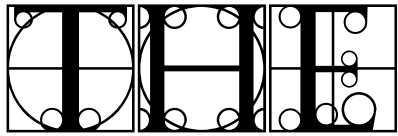
In June I was fortunate enough to have the opportunity to visit Lochac's newest lands,

and was utterly enchanted by the beautiful country, and the wonderful people who live there. There was beauty everywhere I looked, in the lush fields, snow-covered mountains and hot springs. When I attended events at Southron Gaard and Ildhafn, I took special note of the works displayed by the artisans, and I was excited by the variety and quality of work that I saw.

My first event was La Vuelta de Cristóbal Colón a España- The Return of Christopher Columbus to Spain. The hall was simply beautiful, it had once been a chapel, I believe - 2 kitchens, and a field out the back for the Pas d'Arms. Inside was an Arts and Sciences Display with literally dozens of spectacular items on display. Shoes, blackwork, furniture, food, stone carvings, jewellery and underwear The piece of Bayeux tapestry was spectacular.

I was simply awe-struck by Mistress Rowena's scroll. I wish I knew how to use





A Quarterly Newsletter of the Guld of Painters & Limners, in Lochac

the new camera I had, this doesn't do it justice.



BAYEYX



ST GEORGE

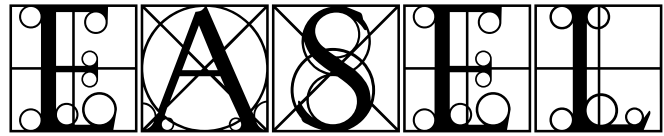
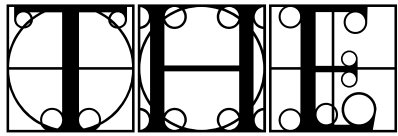


BJ WALL HANGING



LOCHAC MAP

The next event I attended was the Baronial Investiture, at the Ildhafn Bloth.



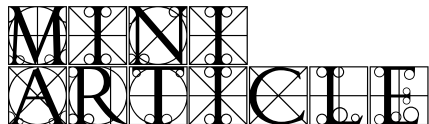
A Quarterly Newsletter of the Guild of Painters & Limners, in Lochac

It was here that I had a great view of the fighting from the window of the Royal Room above. Being one of the Queen's ladies in waiting has its privileges. Another Arts and Sciences display and even greater diversity of the artisans was shown - brewing (or should I say distilling - it's illegal to distil drinks in Australia, so I thought Jardine's brandy was great!), herbs, embroidery, arrow making, just to name a few.

Beatrice did some beautiful wall hangings
I was amazed at the fantastic maps - I was sorry I could only take one photo.

I must say, this was a wonderful experience to visit the newest groups to join Lochac, and found the people to be warm and welcoming, the arts were a delight to behold, and I look forward to the next visit I have in New Zealand. Thank you for your kind hospitality and generosity.

Viscontessa Lucrezia Lorenz
Patron of Painters & Limners Guild



Hints for working on panels;

1. Before you start work on the panel, prepare it. Sand it as flat as you can, and wipe it down with a moist cloth. Let it dry.

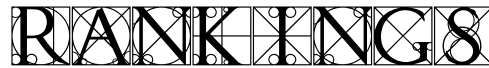
2. If working with joined panels, make your joints from the same type of wood. Different woods have different expansion and contraction rates. Woods used included oak (for the best work), pine (the inexpensive alternative), and others.

3. Acrylic gesso makes an excellent primer when working on a panel painting. It won't be seen and has its benefits. It seals the wood so that you won't have problems with sap or

resin seeping through the paint. In the middle ages gesso was used, but it was made from plaster and white lead. (I've got the recipe somewhere) Use the gesso on the front and sides of the panel. Use a clear sealant on the back of the panel, so that the wood can be seen. Allow to dry thoroughly before painting your masterpiece.

4. Frame the work appropriately. If it isn't in a frame or stand (alterpieces, etc), then it isn't finished.

Happy painting
Marit the Wanderer



On the mailing list, there has been discussion on how to judge ranking of articles for the First Masters...

There has been agreement on voting, by the Guild members, to rank items... but not exactly how. Options are ranking on the web site (Giles has a wonderful piece to view) and/ or by members at events. Please add your views and comments to the discussion.... Our Patron has volunteered to take and compile Internet votes for Rankings.



Guildmaster: Lord Giles de Laval
mark-c@acay.com.au
Chronicler: Lady Katerina da Brescia
kat@iprimus.com.au
Patron: Viscountessa Lucrezia Lorenz:
lucrezia@senet.com.au
Painters email list:
Peynters@yahogroups.com.

THE

EAST

A Quarterly Newsletter of the Guild of Painters & Limners, in Lochac

WE
NEED

STILL

We are looking for:

- Token design - Giles has suggested a St Luke (patron saint of Painters) badge.
- our first Masters of the guild. See Rankings
- how about pics of us on the website, so we can recognise each other when we do get to the same events ?!

BOOKS
WORTH
READ

A

Ames-Lewis, Francis *Drawing in Early Renaissance Italy*, Yale University Press, London, 1981

Robinson, Julie (ed) *Durer and German Renaissance Printmaking* Art Gallery of South Australia, Adelaide, 1996 ISBN:0-7308-3002-0

COLOUR
THE
QUARTER

OF

Black

From *Il Libro dell'Arte* by Cennino d'Andrea Cennini, a 15th C handbook. (my painter's bible).

HOW TO MAKE VARIOUS SORTS OF BLACK.

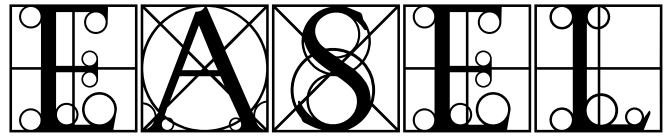
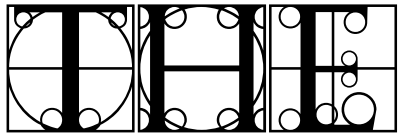
"There is a black which is a soft, black stone.... then there is a black which is made from vine twigs; these twigs are to be burned and when they are burnt, throw water on them, and quench them; and then work them up like the other black..."

There is a black which is made from burnt almond shells or peach stones, and this is a perfect black, and fine...

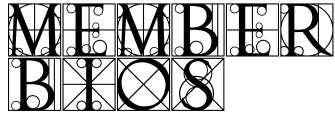
There is another black which is made in this manner: take a lamp full of linseed oil, and fill the lamp with this oil, and light the lamp. Then put it, so lighted, underneath a good clean baking dish, and have the little flame of the lamp come about to the bottom of the dish, two or three fingers away, and the smoke which comes out of the flame will strike on the bottom of the dish, and condense in a mass. Wait for a while,; take the baking dish, and with some implement sweet this color, that is, this soot, off onto a paper, on into some dish; and it does not have to be worked up or ground, for it is a very fine color. Refill the lamp with the oil in this way several times, and put it back under the dish; and make as much of it in this way as you need.

THE
NEEDS
FROM YOU

- information on what you are doing within the guild
- suggestions for newsletter, web site, tokens etc. (yes I know I have mentioned some of these already - get the hint?)
- your SCA and mundane bios to put into the newsletter.
- short articles only. If you have a full, researched article, I am sure the Cockatrice would love to hear from you!



A Quarterly Newsletter of the Guild of Painters & Limners, in Lochac



Guild Chronicler: Lady Katerina da Brescia
(Karen Carlisle) Innilgard

Esclarmonda de Minerve (Lynette Watters)

Esclarmonda resides in the Canton of Stow on the Wowld, within the Barony of Rowany, Kingdom of Lochac, and is quite new to the SCA. Originally from the Languedoc region of France, Esclarmonda has interests in the field of painting, drawing, research, cooking, alchemy and similar. I am a member of the Painters Guild and I am currently researching encaustic painting.

And one from our Patron...

Viscontessa Lucrezia Lorenz enjoys her work as a courtesan, but also seeks the company of younger men to teach them the ways of the world. Occasionally you will find her merchanting, (when business is slow). Within the SCA, she has been fortunate to have served as Princess of Lochac, and as Baroness of Stormhold, two most rewarding positions. She enjoys brewing, and making liqueurs, and has recently discovered a desire to draw, attempting to copy the style of Da Vinci. Lucrezia is involved with the household 'Casa Viola', and enjoys all things purple. She has tried her hand at heavy fighting, fencing, dancing, sewing, cooking, beading and embroidery, marbling fabric, woodwork, calligraphy - in fact, one can try lots of things in 20 years of membership in the SCA.

Skye Greig works as a dictaphone typist for an investigation firm. She lives in her own home with her chihuahuas and chickens. She collects chickens and China dolls. Every weekend, you will find Skye scouring the garage sales and markets for bargains.